



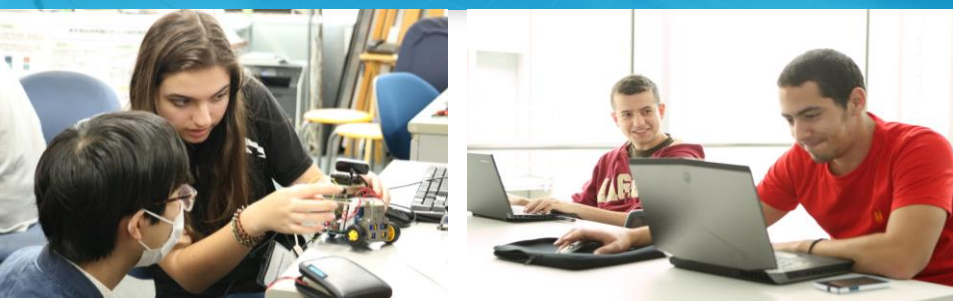
# ONLINE COURSE-TAKING PROGRAM

## APPLICATION PERIOD

July 1st – July 31st  
2022

## Program Length

Fall semester only  
(September to January)




## RANKED

# 30 University in Japan	# 6 Private University in Japan
--------------------------------	---------------------------------------

## 1001+

### World Ranking

The Times Higher Education  
World University Rankings 2021

## PROGRAM DETAILS

- You can take as few as one course and may take up to 24 SIT credits per semester.
- You can take a wide range of courses from advanced courses in science and engineering to general courses.
- You may find a course that is not offered at your university.
- You will have opportunities to interact and work with other international students.
- You can learn Japanese in English. We offer several levels of Japanese language courses.

## ONLINE SESSION

Join us →



Option 1 : 6th July

■ Time: 6:00 p.m. ~ 7:00 p.m.  
Japan time

Option 2 : 7th July


■ Time: 10:00 a.m. ~ 11:00 a.m.  
Japan time

**APPLY >>**

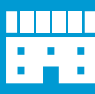
[https://www.shibaura-it.ac.jp/en/study/exchange\\_programs/online\\_coursetaking.html](https://www.shibaura-it.ac.jp/en/study/exchange_programs/online_coursetaking.html)




Acquire new knowledge  
taught in English



Obtain new perspectives  
in the field of  
engineering and science



Chance to experience SIT  
atmosphere online

## TUITION AND FEES

### SIT Partner University Applicants

- Registration fee: JPY15,000
- Tuition and Program fee:  
All waived

### Non-Partner University Applicants

- Registration fee: JPY15,000
- Admission fee: JPY40,000
- Tuition (Course takers only):  
JPY15,000/credit

\* Participants will not be able to come to campus even if the entry restrictions are lifted.